

téléo

FRANCE'S LONGEST URBAN CABLE CAR IN TOULOUSE!

ONCOPOLE
LISE ENJALBERT

HÔPITAL
RANGUEIL
LOUIS LARENG

UNIVERSITÉ PAUL
SABATIER



Projet cofinancé par le Fonds Européen de Développement Régional

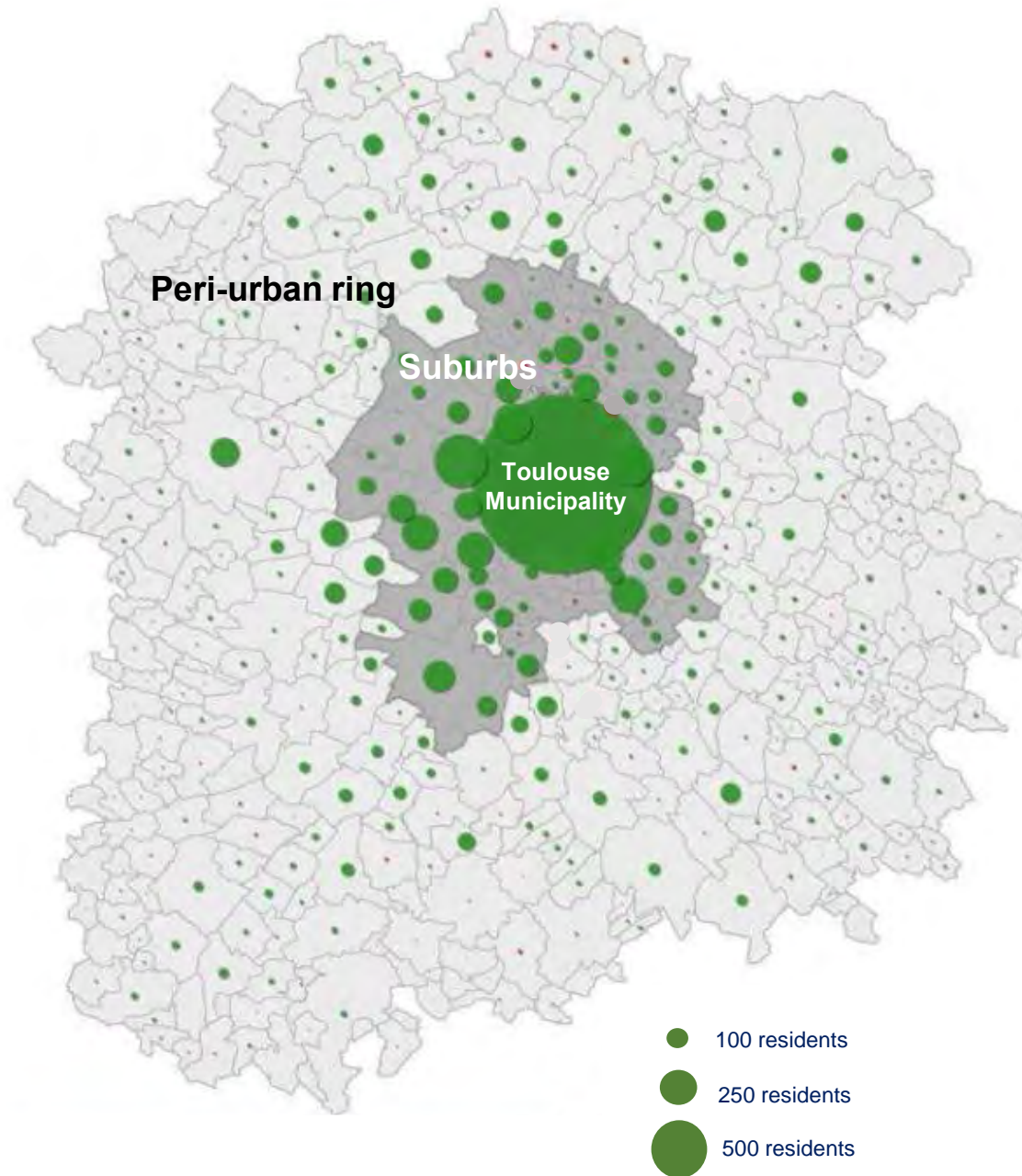


Téléo, a solution to the territory's attractiveness

A strong demographic, economic and urban growth

Téléo, an environmentally-friendly solution

30 times less polluting than cars



115 MUNICIPALITIES

1 MILLION RESIDENTS



+ 15,000 RESIDENTS / YEAR

+ 7,000 JOBS / YEAR

500,000 ADDITIONAL TRAVELS EVERY DAY BY 2025



A structuring project for the South of Greater Toulouse

Travel needs in that area have been
estimated at 8,000 passengers every
day.

Mobility Project
2020 - 2025 - 2030



Watch the Téléo Project film:

<https://www.youtube.com/watch?v=lgLxSdYvbqg>





A project improving the service of large facilities in the South of the Metropolis

Oncopole (IUCT Oncopole, Sanofi, Pierre Fabre...): 10,000 jobs

**Hôpital Rangueil:
200,000 medical consultations every year**

**Université Paul Sabatier:
30,000 students**





WITH TÉLÉO, TOULOUSE PUBLIC TRANSPORTS ARE REACHING FOR THE SKY!

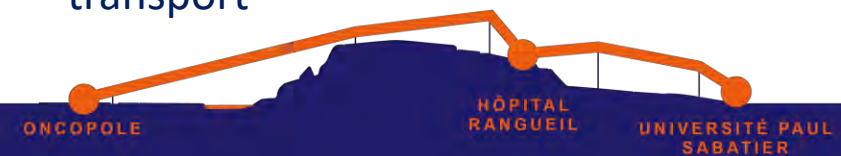


The Téléo cable car will offer a breathtaking view over the Pyrenean chain!

© Tisséo Ingenierie - Airimage

A specific topography which means cable car is the only suitable and efficient means of transport

- › Crossing the Garonne and natural barriers
- › Preserving the natural area
- › Direct route
- › 100% exclusive-lane means of transport





©Tisseo Ingénierie - Airimage

3S TECHNOLOGY, AN EFFICIENT TECHNICAL SOLUTION

With 3 cables (two carrying cables and one hauling cable), the system combines performance and comfort for both passengers and residents.

- › Low footprint on the ground with only 5 pylons (compared to 20 usually) for a discreet landscape integration
- › Better cabin stability and reduced vibrations
- › Frequency and speed can be adapted in real time
- › Reduced noise impact



téléo

The environment will be grateful!

Ecology starts with contemplation! When they take Téléo, passengers will fly over a little-known yet remarkable area in the Toulouse territory: the Parc Garonne and the Pech David hillsides, a unique natural heritage showcased by the Téléo project, which it took care to preserve and consolidate. When the sky is clear, one will be able to enjoy a panoramic view over the wild shores of the Garonne-Ariège confluence (a regional nature reserve) and further, the Pyrenean chain.



PRESERVING FLORA

OVER 1,000 TREES SAVED

OVER 400 TREES REPLANTED

near the stations and the P+R,
and near a number of institutions impacted by the
project: Université Paul Sabatier, Lycée Bellevue...

1,600 FOREST PLANTS PLANTED

on the Pech David green area site
(600 mature trees eventually)

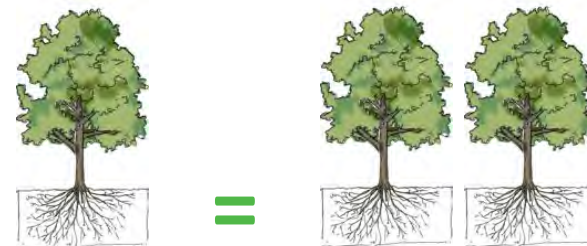
**600 M OF PASTORAL HEDGEROWS
PLANTED**

around the agricultural plots of Pouvourville

Preserving the existing tree patrimony is a major environmental challenge, since a mature tree is much more valuable than a young tree to capture carbon, attract biodiversity and fight climate change.

Optimisation work was carried out ahead of the project and **3S technology** was chosen (implying greater fly-over heights and fewer pylons), and measures to reduce impact were implemented (footprint reduction...), meaning **over 1,000 trees were saved**, including a number of particularly outstanding subjects.

The ambitious objective which consisted in eventually planting 2 trees for every tree impacted has been reached.



25 ha OF WOODED AREAS USED FOR AVIFAUNA
on the municipality of Goyrans in order to
preserve the habitats of protected species such
as black kites, booted eagles...

**6 ha OF “OPEN-ENVIRONMENT” PLOTS USED IN
ORDER TO FAVOUR A PROTECTED BIRD SPECIES**
on the municipality of Montgiscard, to
encourage the development of zitting cisticolas

2 HIGH-TENSION AERIAL ELECTRIC LINES REMOVED

going over the Garonne in Portet-sur-Garonne and
over the Ariège in Clermont-Le-Fort, thanks to funding
by Tisséo, in order to protect the avifauna by reducing
the number of risk areas (obstacles) on these wildlife
corridors

WHEN CABLES WERE UNWOUND
coloured spacers were installed on the cables
to maintain stability, which are also useful to
preserve the avifauna (red for diurnal birds,
white for nocturnal birds).



PRESERVING FAUNA



Ecologists were consulted on a regular
basis during the project's design phase
and were involved at every stage of the
works to **ensure the life of protected
species would not be impacted.**



téléo



POMA Group Urban architects:
SEQUENCES / Pictures: Les Yeux Carrés

ONCOPELE
LISE ENJALBERT

HÔPITAL
RANGUEIL
LOUIS LARENG

UNIVERSITÉ PAUL
SABATIER



Téléo's Oncopole-Lise Enjalbert station stands in the middle of a very green environment, close to the Garonne's wild shores. A simple, minimalist architecture was chosen to bring a soft, transparent effect.

Car park: 500 parking spaces + bicycle parking premises

The background image shows a modern cable car station with a glass and metal facade, supported by white columns. A cable car is suspended from a cable and is moving towards the station. The station is situated on a hillside with green trees and a brick wall in the foreground. In the background, there are other buildings, including a red brick building and a modern glass building.

téléo

HÔPITAL
RANGUEIL
LOUIS LARENG
STATION



POMA Group Urban architects:
SEQUENCES / Pictures: Les Yeux Carrés

ONCOPÔLE
LISE ENJALBERT

HÔPITAL
RANGUEIL
LOUIS LARENG

UNIVERSITÉ PAUL
SABATIER



Téléo's Hôpital Ranguel-Louis Lareng station stands on a site with a very steep incline. From this constraint, a breathtaking station was born, with platforms offering passengers an unparalleled panorama over the Pouvoirville hillsides...

téléo

STATION UNIVERSITÉ PAUL SABATIER



POMA Group Urban architects:
SEQUENCES / Pictures: Les Yeux Carrés

ONCOPÔLE
LISE ENJALBERT

HÔPITAL
RANGUEIL
LOUIS LARENG

UNIVERSITÉ PAUL
SABATIER



© Tisséo Ingénierie - Airimage



©Tisséo Ingénierie - Airimage



©Tisséo Ingénierie - Airimage

Téléo's Université Paul Sabatier station is sleek and modern and is the one accommodating the workshops and the main motorisation system.



PYLONS



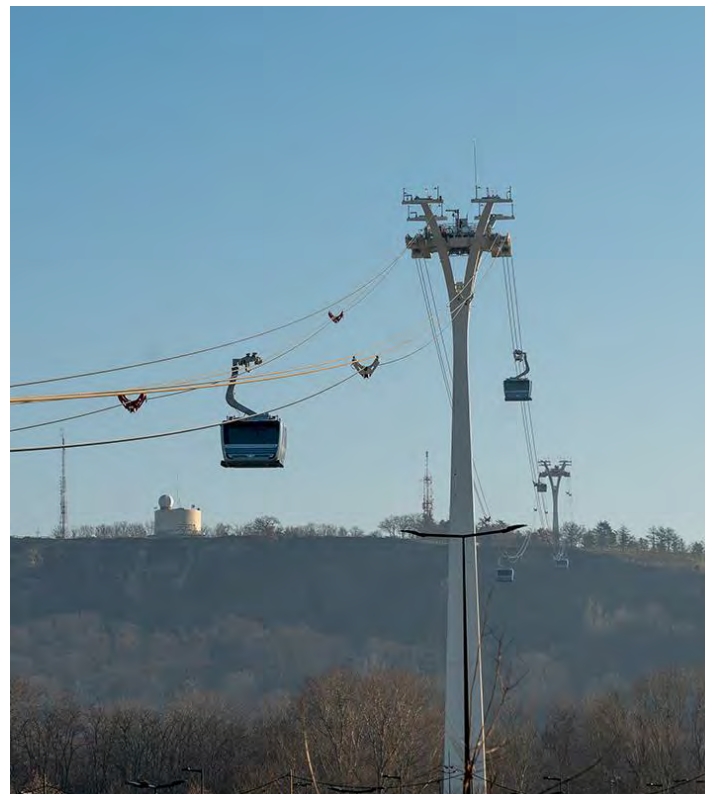
ONCOPOLE

HÔPITAL
RANGUEIL

UNIVERSITÉ PAUL
SABATIER

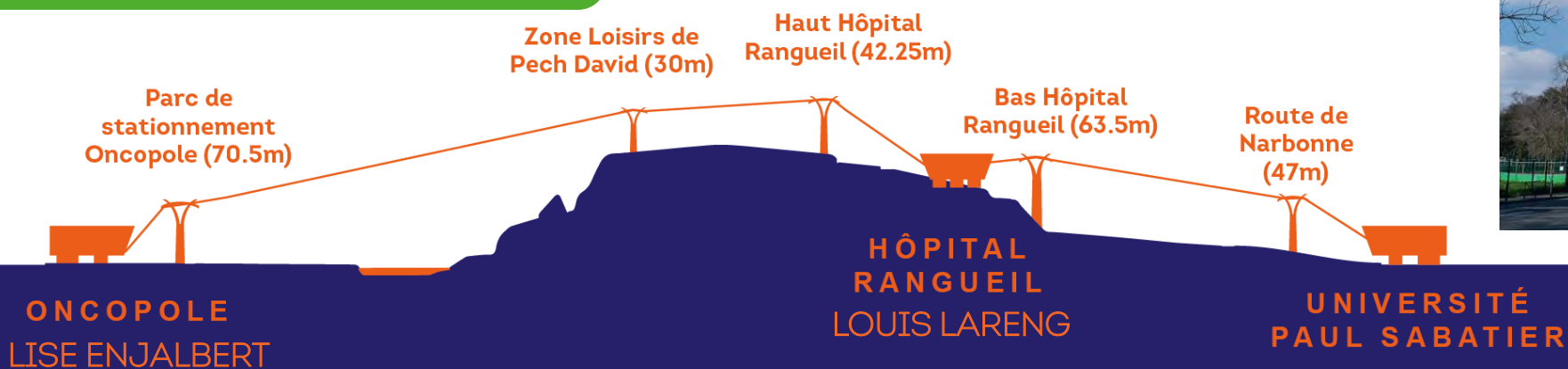


Téléo features 5 pylons. They are white, with a modern design, and range between 30 and 70 metres high



Watch the pylons being installed:

https://www.youtube.com/watch?v=RywE5hwTlAw&feature=emb_logo

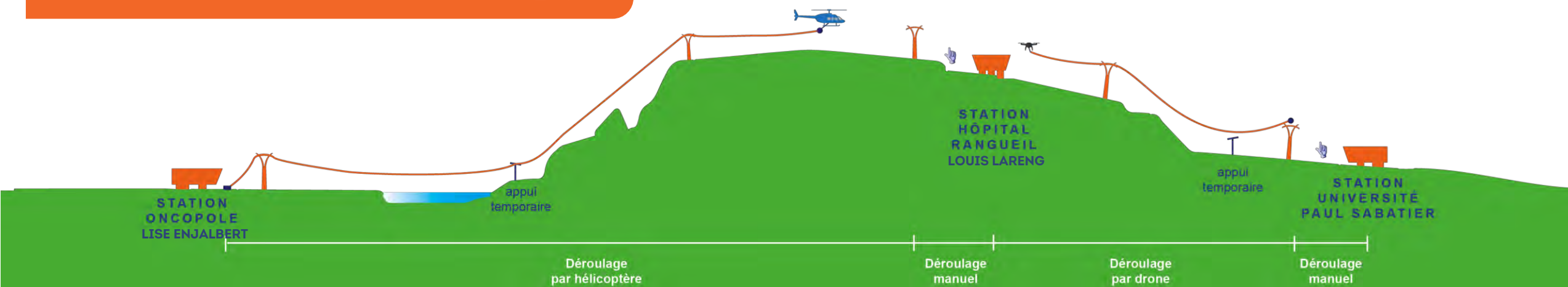


ONLY 5 PYLONS FOR A 3-KM LINE!



Watch the cables being unwound:

https://www.youtube.com/watch?time_continue=1&v=Kn9YAM-aSqM&feature=emb_logo



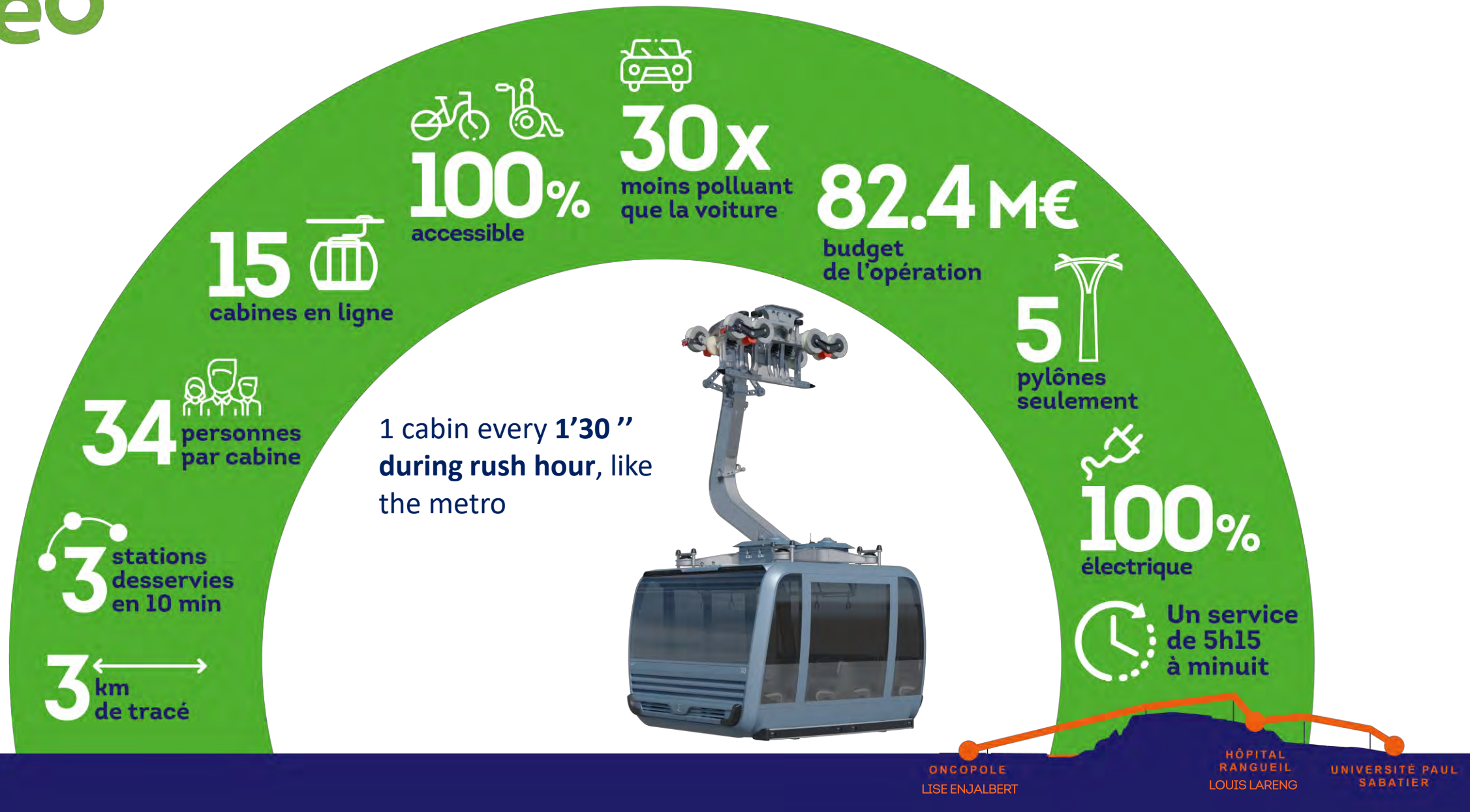


Hauling cable splicing



Watch work progress:

<https://www.youtube.com/watch?v=sskaWo3K-YY>





Project timeline



over 16,000 hours of work by staff on
inclusion programmes (study and works) at
POMA

téléo

FRANCE'S LONGEST URBAN CABLE CAR IS IN TOULOUSE!

ONCOPOLE
LISE ENJALBERT

HÔPITAL
RANGUEIL
LOUIS LARENG

UNIVERSITÉ PAUL
SABATIER



Projet cofinancé par le Fonds Européen de Développement Régional